



Capital Projects & Asset Management Report

Presented by:
Danny Jackson

April 10th, 2025



Agenda

1

Overview of Capital Projects

2

Asset Management Highlights

3

Challenges and Opportunities

1. Capital Projects

1. Accessibility Renovations
2. Hebron/Dayton Wastewater Infiltration and Inflow (I & I)
3. Nova West Regional Business Park Expansion Phase II
4. Mariners Expansion

Accessibility Renovation Update Administration Building

Phase 1 (Council Wing) Progress: Nearing completion, expected by the end of April 2025.

- Includes accessibility upgrades to offices, washrooms, and doorways.
- Ensures compliance with updated accessibility standards.

Phase 2 (Front End/Customer Reception) Timeline: Scheduled to begin immediately after Phase 1.

- Focused on the front-end reception area, improving accessibility for the public and staff.
- Temporary relocation of front reception staff to the downstairs reception area during renovations to maintain business continuity.

Accessibility Renovation Update Administration Building Continued

Phase 3 (Council Chambers) Timeline: TBD.

Employee Support:

- Addressing concerns from staff affected by temporary relocations.
- Ensuring smooth transitions and minimal disruptions to services.

Long-Term Benefits:

- Enhances inclusivity and usability for all visitors and staff.
- Aligns with the Municipality's commitment to accessibility and strategic development goals





Accessibility Renovation Update the Rotary Centre

Completion: Accessibility renovations are on track to be completed by April/May 2025.

- Key improvements include wheelchair-accessible entrances, upgraded pathways, accessible washrooms, doors, and accessible parking.

Coordination with Stakeholders:

- Close collaboration with REMO and the recreation department to align construction plans with operational needs.
- A communication strategy is in place to minimize disruptions to users of the facility.

Accessibility Renovation Update the Rotary Centre Continued

Community Impact:

- Enhanced accessibility aligns with the Municipality's vision for inclusive spaces.
- Provides improved functionality and usability for all community members.

Budget and Oversight:

- Managed under the approved capital projects budget.
- Regular updates are provided to ensure transparency and alignment with project goals.





Dayton Inflow and Infiltration (I & I)

1

Milo Lift Station

Excessive flows
I & I
investigation

2

Contractor

Chemically injected
10 manholes for
groundwater
infiltration around
the pipe

3

Identify Sink Hole

Greenville Road has
had a sinkhole
appear 3 times;
contractor
scheduled to
investigate

4

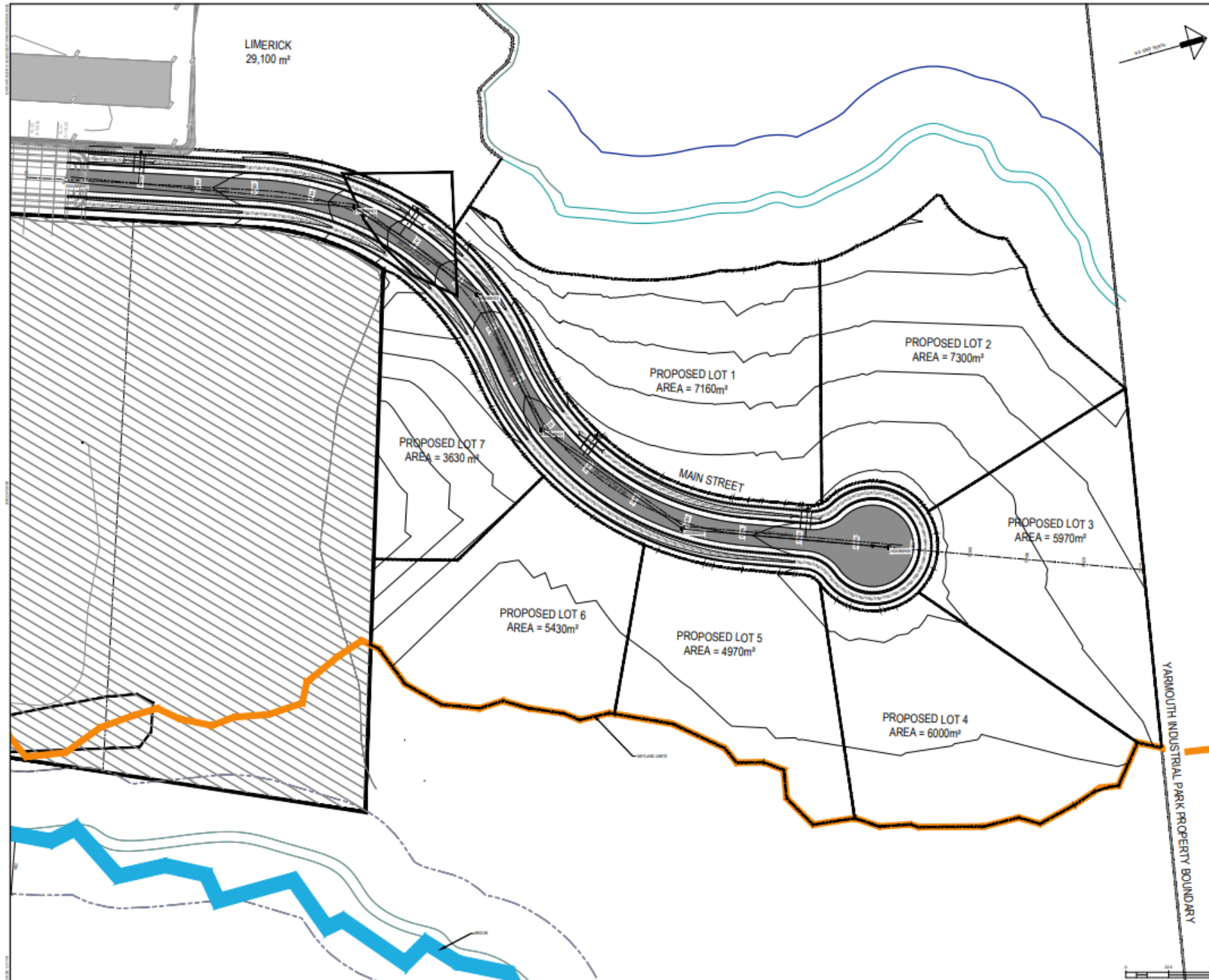
Greenville Road

To cure in-place pipe
(CIPP) on the existing
concrete sewer main
to reduce infiltration
from joint separation
and cracks



Nova West Regional Business Park Expansion Phase II

- Expansion of infrastructure to accommodate increased business development.
- Includes road construction and 7 fully serviced commercial lots.
- Project documents were **issued for tender (IFT)**, and **2 bid submissions** have been received.
- Bid Evaluation still underway



exp

• BUILDINGS • EARTH & ENVIRONMENT • ENERGY • INDUSTRIAL • INFRASTRUCTURE • SUSTAINABILITY •

KEYPLAN

LEGEND

- PROPERTY BOUNDARY
- PROPOSED LOTS
- PROPOSED CENTERLINE
- PROPOSED ROAD EDGE
- PROPOSED TOP-OF-SLOPE
- PROPOSED WATER
- PROPOSED SANITARY
- EXISTING SANITARY
- PROPOSED CONTROLLING
- EXISTING CONTROLLING
- FIELD PROPERTY
- PROPOSED ASPHALT
- GRAVEL/CURB CUT
- PROPOSED GRADE
- EXISTING GRADE
- PROPOSED FIRE HYDRANT

No.	Revision	Date

PRELIMINARY

Professional Engineer

Drawn By:	JSP
Check/Reviewed/Date By:	S 1/2020
Designed By:	SCM
Checked/Checked By:	S 1/2020
Scale:	1:1000
Project Title:	NOVA WEST REGIONAL BUSINESS PARK

PROPOSED SERVICES

Project No:	HFX-00236110-A5
Sheet No:	C-101
Sheet Count:	C

Mariners Expansion

Mariners Centre Expansion - Three Week Look-ahead Update (March 20 to April 10)

Structural Work:

- Formwork and rebar installation along several grid lines.
- Concrete pouring on walls along GL L/GL6 to GL13 and other sections proceeding on schedule.

Backfilling and Drainage:

- Backfilling walls along GL1/GL A to GL G remains on schedule.
- Piping for weeping tiles and drainage was completed by R&D Harris as planned.

Mariners Expansion Continued

Damp proofing:

- Damp proofing underway along GL1/GL G to GL M and GL M/GL1 to GL6.

Mechanical Room:

- Backfilling pits and preparation for cast-in-place components in the mechanical room progressing as scheduled.

Utility Connections:

- Excavation for water, storm, and sanitary entry on track for completion.

General Timeline:

- All scheduled activities are on track with no reported delays, ensuring consistent progress toward project milestones.



Asset Management Update

Data Set Updates:

- Updating vertical and linear asset datasets to ensure accuracy and completeness.
- Integration of new asset data into ArcGIS and spreadsheets for improved tracking and analysis.

Condition Assessments:

- Completing condition assessments for critical infrastructure, including roads, facilities, and wastewater systems.
- Results used to prioritize maintenance and renewal projects based on asset health and lifecycle costs.
- Identified key areas requiring immediate attention to prevent further degradation.

Asset Management Update Continued

Recommendations: Risk, Level of Service (LoS), Condition Assessments

- Wastewater Collection Flushing program
- Chemical injection of 10 manholes in Hebron/Dayton for I & I.
- Cure in Place Pipe (CIPP) for 800m of Greenville Road Concrete Wastewater pipe.
- 62 RCOM rooftop HVAC units.
- Replace the Rotary Centre roof.
- Recommend budget allocation adjustments to align with prioritized infrastructure needs.
- Explored funding opportunities to support renewal projects and minimize financial strain.

Alignment with Strategic Goals:

- Supports data-driven decision-making for long-term sustainability.
- Enhances service delivery by focusing resources on critical infrastructure needs.

A photograph of a lighthouse on a rocky island at sunset. The lighthouse is white with a red top section and a red lantern room. It is situated on a rocky outcrop. The sky is a mix of blue and orange, and the water in the foreground reflects the lighthouse and the sky. The text "Thank you" is overlaid in white on the image.

Thank you

Questions